

DETECTION OF BRAIN TUMOR BELOW 3MM USING NIR SENSOR

lakshmi S*

M.E/Embedded system technology,
Sri ram engineering college
lakshmibubbly2@gmail.com

jegajothi.B

Asst.professor EEE Dept.
sri ram engineering college
jegajothibalakrishnan@gmail.com

Abstract - : *Brain tumor is one of the most life-threatening diseases and hence its detection should be fast and accurate. This can be achieved by the execution of automated tumour detection techniques on medical images. Some the presently using medical imaging techniques are MRI, CT , micro wave which cannot detect below 3mm size can be detected using Near Infrared imaging techniques*

Key Words: *Near infrared, medical imaging*

I. INTRODUCTION.

The aim objective of this project to detect the brain tumor using the near infrared imaging technology for tumor size below 3mm which could not be detected using CT and MRI images. It is an non-invasive methods of detecting tumors.A brain tumor is a collection (or mass) of abnormal cells in the brain. The skull is very rigid and the brain is enclosed, so any growth inside such a restricted space can cause problems. Brain tumors can be cancerous (malignant) or non-cancerous (benign). The existing system are Magnetic Resonance Imaging (MRI) depends on magnetic activity in the brain and does not use X-rays, so it is considered more safe than imaging techniques that do use X-rays. SPECT uses gamma rays, which are characteristically more safe than other imaging systems using alpha or beta rays. Both PET and SPECT scans require the injection of radioactive materials, but the half-lives of [isotopes](#) used in SPECT can be more easily managed The exiting system of the project uses the RADAR technology .Use the micro wave imaging to detect the brain tumor .The draw back of the exiting system is micro wave may damage the brain cell if the level of the micro wave increased little bit.

II.PROPOUSED SYSTEM

Here instead of using radar technologies, a new Near infrared imaging is proposed for the tumor detection in brain .This NIR imaging uses the 780nm frequency IR LED for imaging. The 780nm led transmitter and photo detector led (Receiver) is used for the imaging .Which act like an radar system .And for accurate result, LSVM signal processing techniques is used

III- NEAR-INFRARED SENSOR

It is a spectroscopic method that uses the near-infrared region of the electromagnetic spectrum (from about 700 nm to 2500 nm). Typical applications include pharmaceutical, medical diagnostics (including blood sugar and pulse oximetry), food and agrochemical quality control, and combustion research, as well as research in functional neuroimaging, sports medicine & science, elite sports training, ergonomics, rehabilitation, neonatal research, brain computer interface, urology (bladder contraction), and neurology (neurovascular coupling).

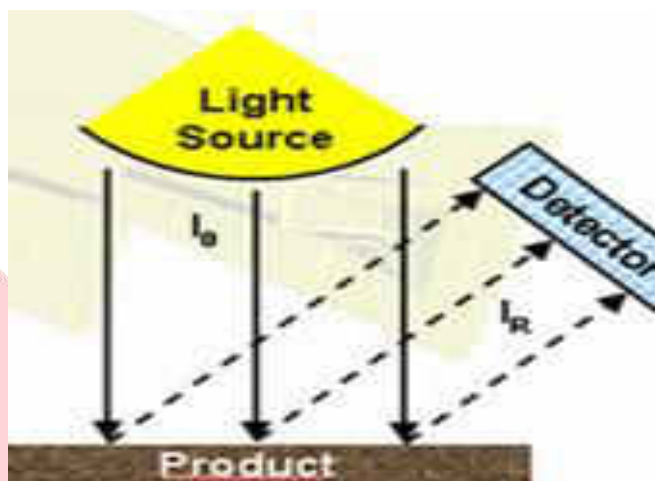


Fig1:processes of NIR sensor

Common incandescent or quartz halogen light bulbs are most often used as broadband sources of near-infrared radiation for analytical applications. Light-emitting diodes (LEDs) are also used; they offer greater lifetime and spectral stability and reduced power requirements.

The type of detector used depends primarily on the range of wavelengths to be measured. Silicon-based CCDs are suitable for the shorter end of the NIR range, but are not sufficiently sensitive over most of the range (over 1000 nm). InGaAs and PbS devices are more suitable though less sensitive than CCDs. In certain diode array (DA) NIRS instruments, both silicon-based and InGaAs detectors are employed in the same instrument. Such instruments can record both UV-visible and NIR spectra 'simultaneously'. Many commercial instruments for UV/vis spectroscopy are capable of recording spectra in the NIR range (to perhaps ~900 nm). In the same way, the range of some mid-IR instruments may extend into the NIR. In these instruments, the detector used for the NIR wavelengths is often the same detector used for instrument

IJARBEST

Research at its Best !!!

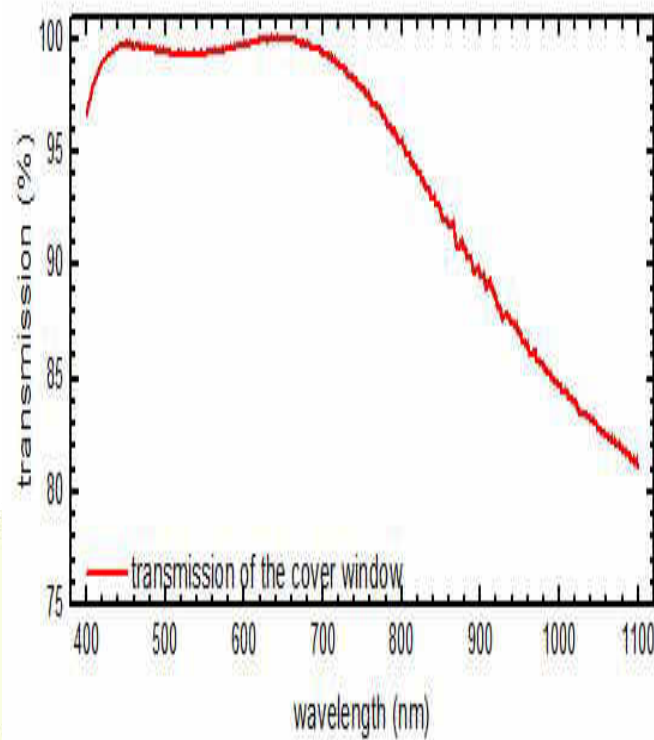


Fig2: wave from of NIR sensor

IV. STFT FILTER

Segment the signal into narrow time intervals (i.e., narrow enough to be considered stationary) and take the FT of each segment. Each FT provides the spectral information of a separate time-slice of the signal, providing simultaneous time and frequency information. Choose a window function of finite length. Place the window on top of the signal at $t=0$. Truncate the signal using this window. Compute the FT of the truncated signal, save results. Incrementally slide the window to the right. window reaches the end of the signal

Research at its Best III

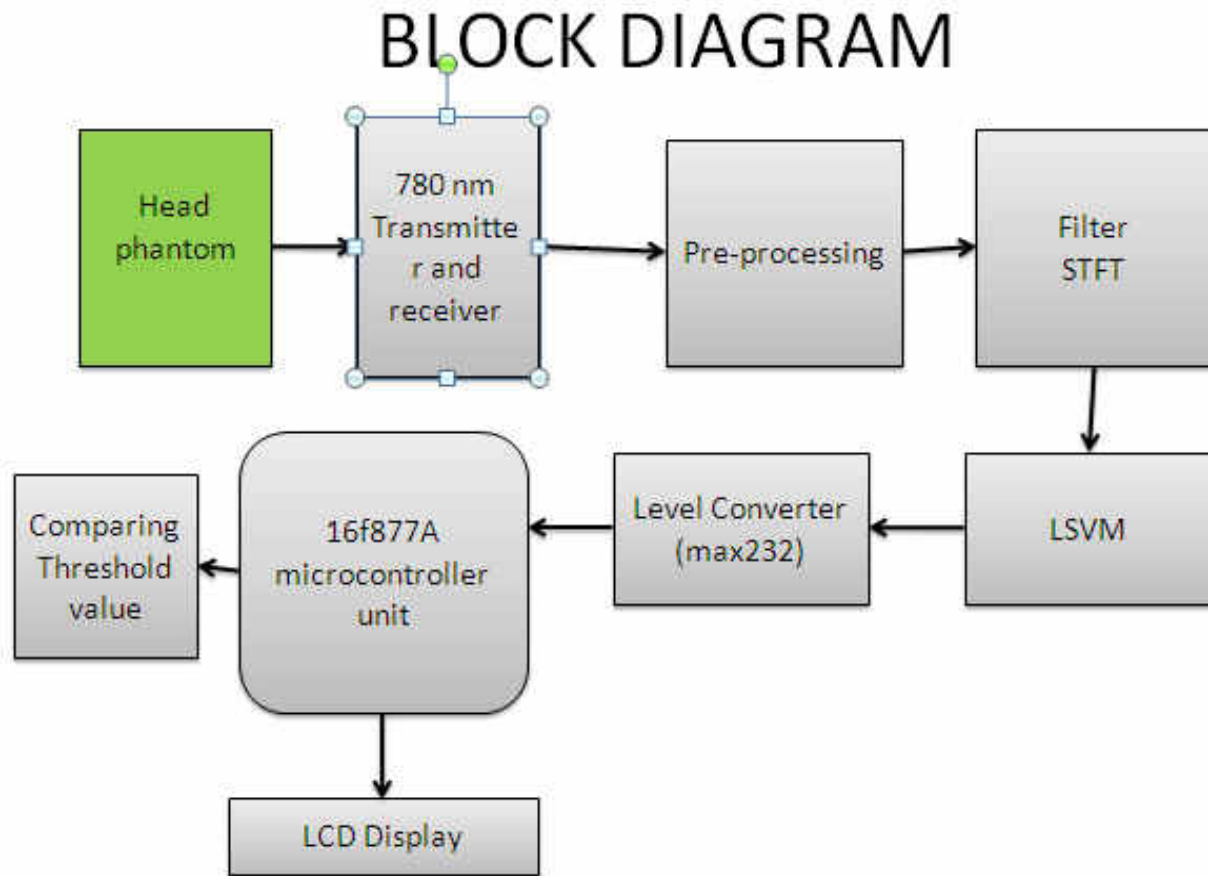


FIG3: block diagram of proposed system

V. LSVM (Lagrangian Support Vector Machine) Algorithm

Before stating our algorithm we define two matrices to simplify notation as follows:

$$H = D[A \quad -e], \quad Q = \frac{I}{\nu} + HH'$$

With these definitions the dual problem becomes

$$\min_{0 \leq u \in R^m} f(u) := \frac{1}{2} u' Q u - e' u \cdot Q^{-1}$$

It will be understood that within the LSVM Algorithm, the single time that is computed at the outset of the algorithm, the SMW identity will be used. Hence only an matrix is inverted. The LSVM Algorithm is based directly on the Karush-Kuhn-Tucker necessary and sufficient optimality conditions KTP for the dual problem

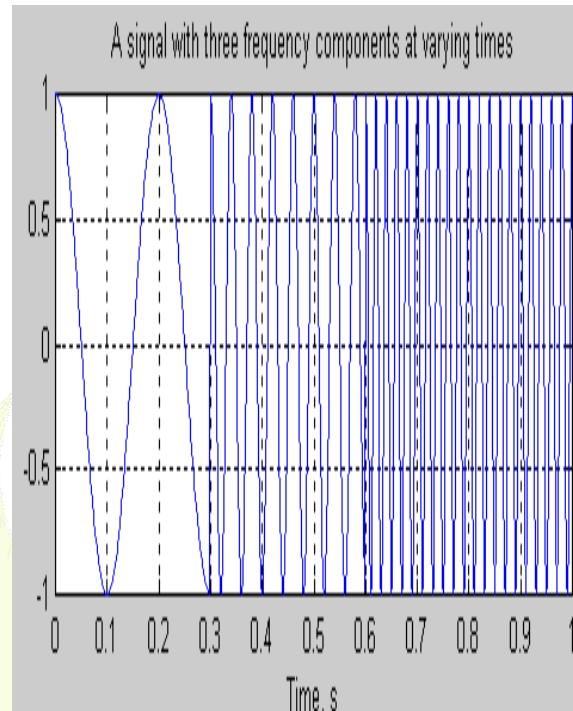


Fig4:signals from stft filter

$$0 \leq u \perp Qu - e \geq 0.$$

By using the easily established identity between any two real numbers (or vectors) a and b :

$$0 \leq a \perp b \geq 0 \iff a = (a - \alpha b)_+, \alpha > 0,$$

the optimality condition can be written in the following equivalent form for any positive α :

$$Qu - e = ((Qu - e) - \alpha u)_+.$$

These optimality conditions lead to the following very simple iterative scheme which constitutes our LSVM Algorithm:

$$u^{i+1} = Q^{-1}(e + (((Qu^i - e) - \alpha u^i)_+)), \quad i = 0, 1, \dots,$$

for which we will establish global linear convergence from any starting point under the easily satisfiable condition:

Setting the gradient with respect to u of this convex and differentiable Lagrangian to zero gives

$$(Qu - e) + \frac{1}{\alpha}(Q - \alpha I)((Q - \alpha I)u - e)_+ - \frac{1}{\alpha}Q(Qu - e) = 0,$$

or equivalently:

$$(\alpha I - Q)((Qu - e) - ((Q - \alpha I)u - e)_+) = 0,$$

which is equivalent to the optimality condition under the assumption that α is positive and not an eigenvalue

V-RESULT

Near-Infrared Imaging and Tumor Compared with CT, and MRI, targeted NIR imaging, intraoperative x-ray fluoroscopy, affords the combination of tumor specificity, low cost, safety, and, simplicity without exposing patients and personnel to ionizing radiation. The NIR sensor placed on the head phantom. the sensor reading is preprocessed (amplifying the signal)The filter(STFT) is applied to reduce the noise. The LSVM is used separate the signals Then tumour size is detected

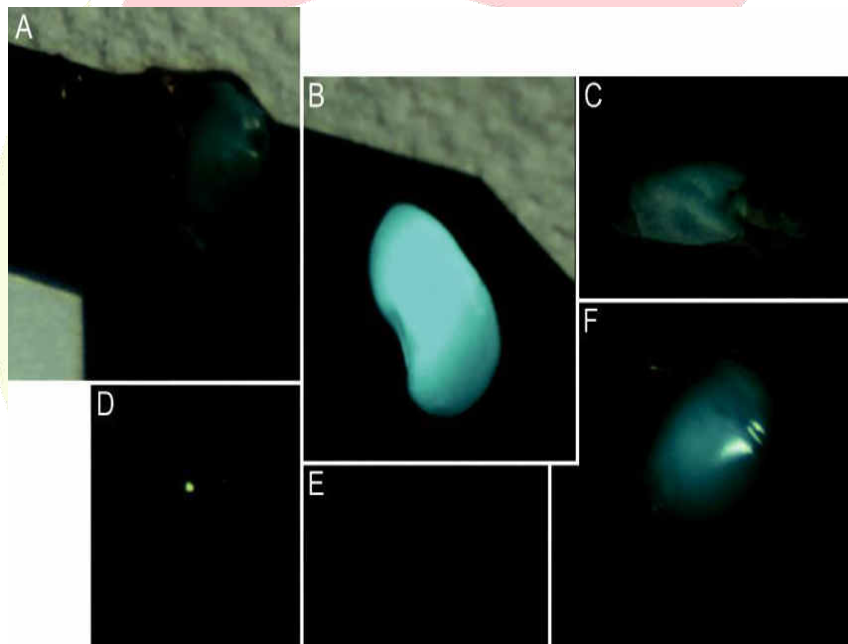


fig:5:result image of brain tumor

VI. CONCLUSION

A low powered, high accurate, high speed technique has been presented for detecting the brain tumor less than 3mm. The performance of the NIR imaging has been verified in a head imaging system where a brain tumour was successfully detected in an artificial head phantom.

VII. REFERENCES

1. Akcan M, Stroud MR, Hansen SJ, Clark RJ, Daly NL, CraikDJ, et al: Chemical re-engineering of chlorotoxin improves bioconjugation properties for tumor imaging and targetedtherapy. **J Med Chem** **54**:782–787, 2011
2. Alander JT, Kaartinen I, Laakso A, Pätälä T, Spillmann T, Tuchin VV, et al: A review of indocyanine green fluorescentimaging in surgery. **Int J Biomed Imaging** **2012**:940585, 2012
3. Behbahaninia M, Martirosyan NL, Georges J, Udovich JA, Kalani MY, Feuerstein BG, et al: Intraoperative fluorescentimaging of intracranial tumors: a review. **Clin Neurol Neurosurg** **115**:517–528, 2013
4. Berger MS: Malignant astrocytomas: surgical aspects. **SeminOncol** **21**:172–185, 1994
5. Borofsky MS, Gill IS, Hemal AK, Marien TP, Jayaratna I, Krane LS, et al: Near-infrared fluorescence imaging to facilitatesuper-selective arterial clamping during zero-ischaemirobotic partial nephrectomy. **BJU Int** **111**:604–610, 2013
6. Brandes AA, Tosoni A, Franceschi E, Reni M, Gatta G, VechtC: Glioblastoma in adults. **Crit Rev Oncol Hematol** **67**:139–152, 2008

7. Byar DP, Green SB, Strike TA: Prognostic factors for malignant glioma, in Walker MD (ed): **Oncology of the Nervous System**. Boston: Martinus Nijhoff, 1983, pp 379–395
8. Cahill RA, Anderson M, Wang LM, Lindsey I, Cunningham C, Mortensen NJ: Near-infrared (NIR) laparoscopy for intraoperatively lymphatic road-mapping and sentinel node identification during definitive surgical resection of early-stage colorectal neoplasia. **Surg Endosc** **26**:197–204, 2012
9. Crane LM, Themelis G, Pleijhuis RG, Harlaar NJ, Sarantopoulos A, Arts HJ, et al: Intraoperative multispectral fluorescence imaging for the detection of the sentinel lymph node in cervical cancer: a novel concept. **Mol Imaging Biol** **13**:1043–1049, 2011 (Erratum in **Mol Imaging Biol** **13**:1050, 2011)
10. Ducray F, Dutertre G, Ricard D, Gontier E, Idbaih A, Massard C: [Advances in adults' gliomas biology, imaging and treatment.] **Bull Cancer** **97**:17–36, 2010 (Fr)
11. Eljamel MS: Fluorescence image-guided surgery of brain tumors: explained step-by-step. **Photodiagn Photodyn Ther** **5**:260–263, 2008
12. Eljamel MS, Goodman C, Moseley H: ALA and Photofrin fluorescence-guided resection and repetitive PDT in glioblastoma multiforme: a single centre Phase III randomised controlled trial. **Lasers Med Sci** **23**:361–367, 2008
13. Fazekas JT: Treatment of grades I and II brain astrocytomas. The role of radiotherapy. **Int J Radiat Oncol Biol Phys** **2**:661–666, 1977
14. Fujita M, Lee BS, Khazenzon NM, Penichet ML, Wawrowsky KA, Patil R, et al: Brain tumor tandem targeting using a combination of monoclonal antibodies attached to biopoly(beta-L-malic acid). **J Control Release** **122**:356–363, 2007
15. Gilmore DM, Khullar OV, Colson YL: Developing intrathoracic sentinel lymph node mapping with near-infrared fluorescent imaging in non-small cell lung cancer. **J Thorac Cardiovasc Surg** **144**:S80–S84, 2012
16. Gilmore DM, Khullar OV, Jaklitsch MT, Chirieac LR, Frangioni JV, Colson YL: Identification of metastatic nodal disease in a phase I dose-escalation trial of intraoperative sentinel lymph node mapping in non-small cell lung cancer using near-infrared imaging. **J Thorac Cardiovasc Surg** **146**:562–570, 2013
17. Gotoh K, Yamada T, Ishikawa O, Takahashi H, Eguchi H, Yano M, et al: A novel image-guided surgery of hepatocellular carcinoma by indocyanine green fluorescence imaging navigation. **J Surg Oncol** **100**:75–79, 2009
18. Hefti M, von Campe G, Moschopoulos M, Siegner A, Looser H, Landolt H: 5-aminolevulinic acid induced protoporphyrin IX fluorescence in high-grade glioma surgery: a one-year experience at a single institution. **Swiss Med Wkly** **138**:180–185, 2008
19. Hirche C, Engel H, Kolios L, Cognie J, Hünerbein M, Lehnhardt M, et al: An experimental study to evaluate the fluobeam800 imaging system for fluorescence-guided lymphatic imaging and sentinel node biopsy. **Surg Innov** **20**:516–523, 2013
20. Mamelak AN, Jacoby DB: Targeted delivery of antitumor therapy to glioma and other malignancies with synthetic chlorotoxin (TM-601). **Expert Opin Drug Deliv** **4**:175–186, 2007
21. Marano A, Priora F, Lenti LM, Ravazzoni F, Quarati R, Spinoglio G: Application of fluorescence in robotic general surgery: review of the literature and state of the art. **World J Surg** **37**:2800–2811, 2013
22. Mieog JS, Hutteman M, van der Vorst JR, Kuppen PJ, Que I, Dijkstra J, et al: Image-guided tumor resection using real-time near-infrared fluorescence in a syngeneic rat model of primary breast cancer. **Breast Cancer Res Treat** **128**:679–689, 2011
23. Mieog JS, Troyan SL, Hutteman M, Donohoe KJ, van der Vorst JR, Stockdale A, et al: Toward optimization of imaging system and lymphatic tracer for near-infrared fluorescent sentinel lymph node mapping in breast cancer. **Ann Surg Oncol** **18**:2483–2491, 2011
24. Moroga T, Yamashita S, Tokuyoshi K, Miyawaki M, Anami K, Yamamoto S, et al: Thoracoscopic segmentectomy with intraoperative evaluation of sentinel nodes for stage I non-small cell lung cancer. **Ann Thorac Cardiovasc Surg** **18**:89–94, 2012

